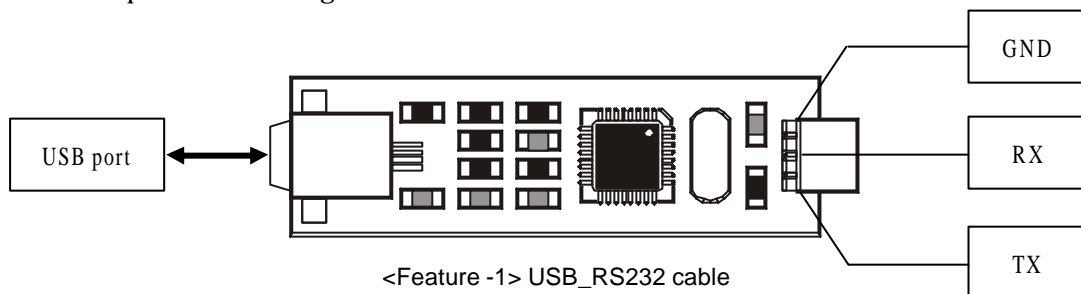


General description

USB_RS232 cable is a portable device designed for converting USB port into serial port (3pins). With the cable, you can connect RS232 communication device with USB port. Usage of the cable is same as RS232 communication.

System requirements

- 1) PENTIUM II or higher
- 2) Empty USB port
- 3) WIN 98 or higher (Win 98, win 98SE/ME/2000/XP etc)
- 4) Internet Explorer V5.0 or higher



Installation

Download USB Driver (USB. ZIP) at Comfile download center.



Unzip the file (USB. ZIP) in a certain directory.



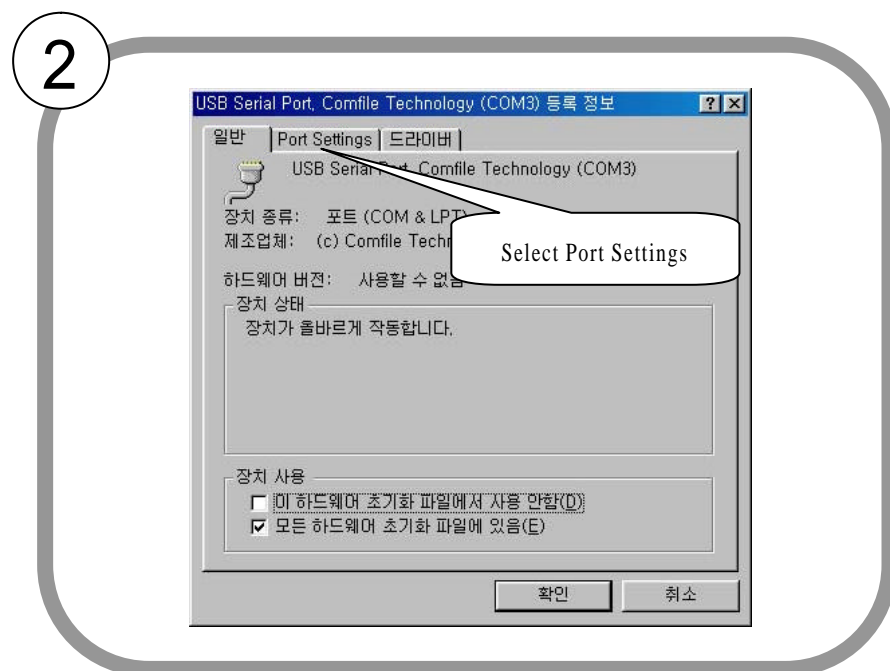
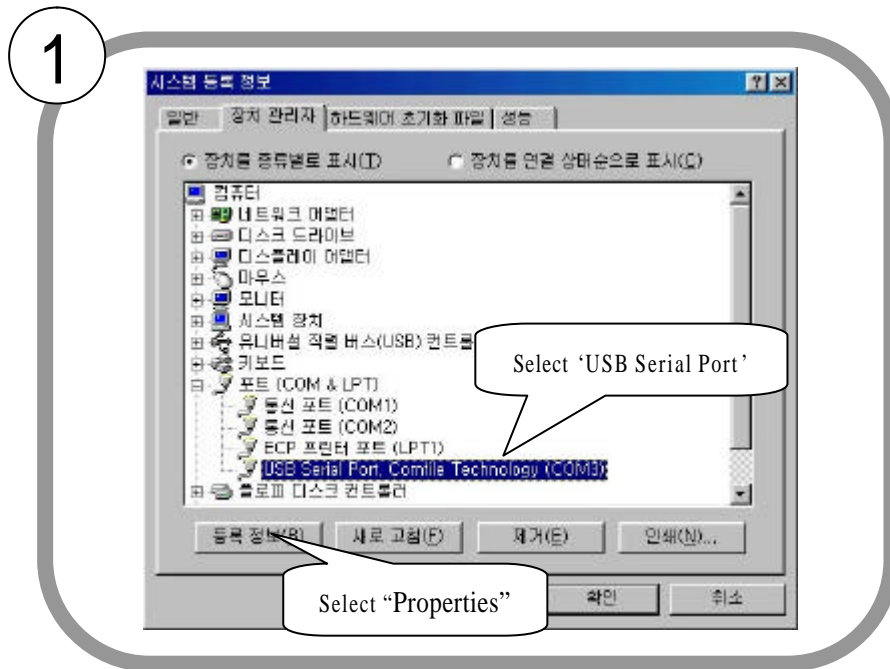
Connect USB CABLE to USB port.



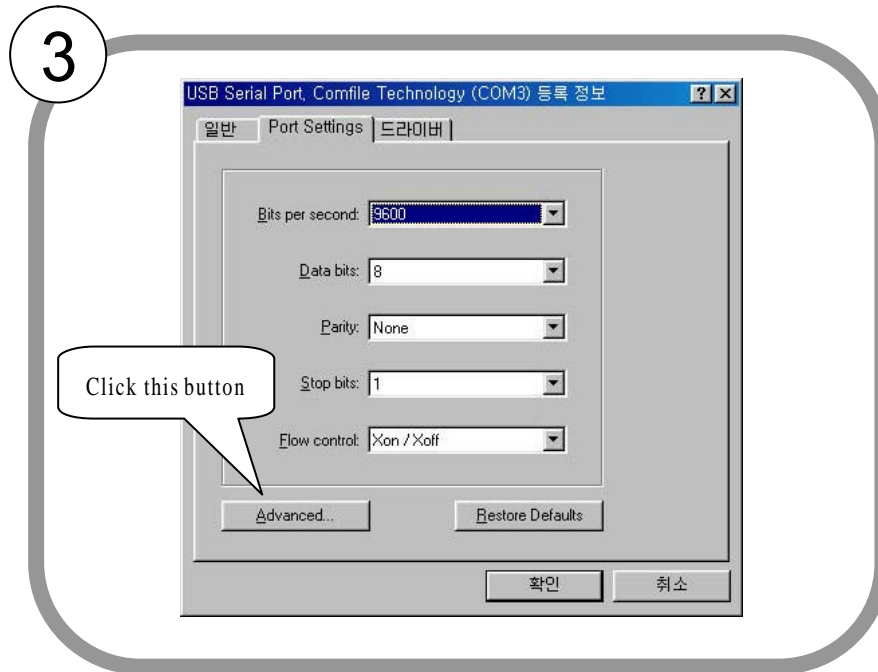
After shown message "New device is detected", select the directory where you unzipped USB. ZIP.

Setting RS232 port

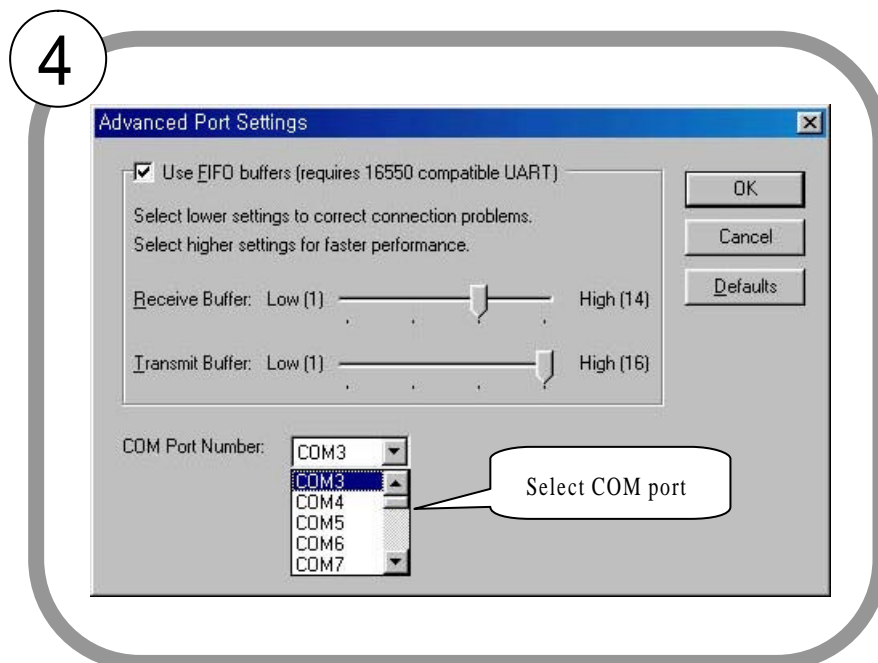
1. Go to Control panel => System => Device manager => Port => USB serial Port. Comfile Technology
2. Select 'Properties'

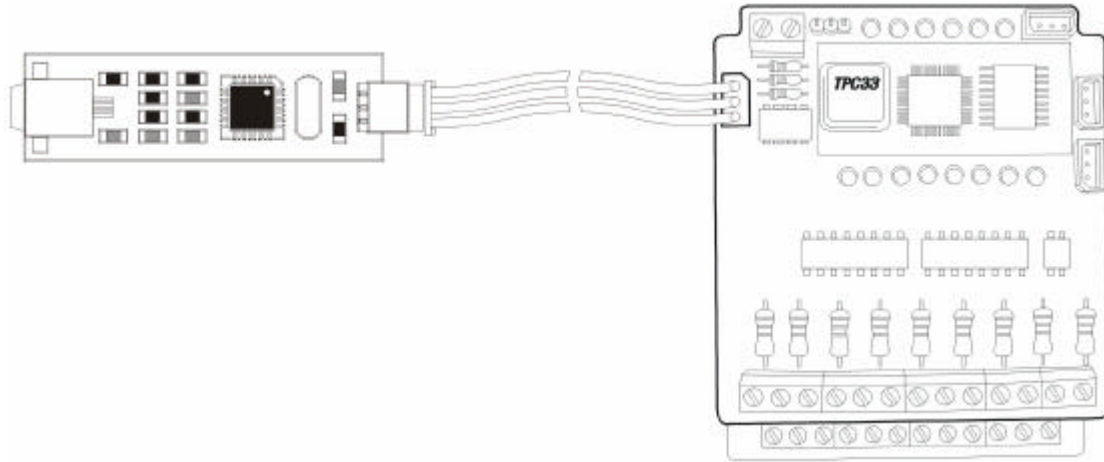


Select “Port Settings” in ‘Properties’. Then you will see the following window.



You can adjust circumstance for RS232 communication in “Port Settings” tab. Select suitable value for your working condition in ‘bits per second’. To set COM port, click ‘Advanced...’.





<Feature-2>. Example. Downloading PLC program through USB port.

Example)

After connecting the USB_RS232 cable to PLC model SB-14R, select the port COM 3 for download as following Picture and click the Auto button.

